

MICHAEL B. FUCHSMAN

DIRECTOR OF CREATIVE SERVICES, MARKETING DIRECTOR
TEAM LEADER, BRANDING IDENTITY, DIGITAL DESIGN

- GRAPHIC DESIGN
- DIGITAL ILLUSTRATION
- DESKTOP PUBLISHING
- WEBSITE UX/UI DEVELOPMENT
- PRODUCT, HEADSHOT & REAL ESTATE PHOTOGRAPHY
- MOTION GRAPHICS ADVERTISING
- VIDEO PRODUCTION
- 2D-TO-3D CONVERSION



Logo Research & Design



Cinema Advertising Council



ROCKY MOUNTAIN ENGINEERING & MATERIALS TECHNOLOGY, INC.



INFORMATION TECHNOLOGY



est. 2018



WINNING FINANCIAL SOLUTIONS

Desktop Publishing

Table of Contents

CIO Welcome Letter ... 3
City Of Olathe Overview ... 4
Executive Summary ... 5-8

- MTP Plan Definition - 5
- MTP Plan Scope - 5
- Development Of The Master Technology Plan - 6
- MTP Metrics And Measurements - 6

Information Technology Overview ... Z

- IT Culture
- Power of 'City One IT.'

IT Mission, Vision, Guiding Principles and Leadership Philosophy ... 8
Technology Strategic Focus ... 9
IT Department Divisions ... 10-16

- Overview - 10
- Administration - 11
- Cybersecurity - 12
- Finance - 13
- Program Management Office - 14
- Technology Operations - 15
- Business and Data Solutions - 16

IT Advisory Teams ... 17-21

- Overview - 17
- Security Steering Committee - 17
- IT Governance - 18
- Technology Fund Review Committee - 18
- E1 Steering Committee - 19
- Open Data Champions Committee - 20
- Mobile Advisory Team - 21
- Data & Business Intelligence Team - 21

Information Security ... 22

- Introduction
- City's Security Program

Master Technology Architecture ... 23-27

- Overview - 23

Infrastructure Layer:

- Fiber Infrastructure - 23
- Mobility - 23
- Virtualization Architecture - 23
- Cloud - 24

Application Layer:

- Citywide Data Service Bus - 25
- Big Data - 25
- Open Data - 25
- Digital Asset Management - 26
- Customer Relationship Management (CRM) - 26
- Business Intelligence (BI) - 27
- Geographic Information System (GIS) - 27

City of Olathe Departments ... 28-70

- City Manager's Office (CMO) Insights and Emerging Technologies - 28
- Communication and Customer Services Offices (CCSO) Insights - 29
- Critical Systems and Emerging Technologies - 30-32
- City Attorney's Office Insights and Emerging Technologies - 33
- Olathe Police Department Insights - 34
- Critical Systems and Emerging Technologies - 35-40
- Fire Department Insights - 41
- Critical Systems and Emerging Technologies - 42-45
- Parks and Recreation Insights - 46
- Critical Systems and Emerging Technologies - 47-49
- Resource Management Insights - 50
- Critical Systems and Emerging Technologies - 51-52
- Court Department Insights, Critical Systems and Emerging Technologies - 53-54
- Public Works Insights - 55
- Critical Systems and Emerging Technologies - 56-61
- Library Insights - 62
- Critical Systems and Emerging Technologies - 63-65
- IT Technology Infrastructure - 66
- Critical Systems and Emerging Technologies - 67-69

Emerging Technologies ... 70-77

- Overview - 70
- Smart City - 71-72
- Next Generation Telecommunications - 73
- Nanotechnology - 74
- Artificial Intelligence & Agents - 74
- Digital Workplace - 75
- Open Data - 75
- Predictive Analytics - 76
- Internet of Things (IoT) - 76
- Citizen Digital Engagement - 77
- Digital Video Systems - 77

Conclusion ... 78

• Design: Illustration and layout by Summit Media Design LLC • Color by Printcolor Solutions, San Francisco

Executive Summary

MTP PLAN DEFINITION

The City of Olathe Master Technology Plan (MTP) defines the critical systems and technology necessary to provide the services for all of the city's business departments and services to our community. The plan describes the current Information Technology (IT) department and IT vision, mission, and strategy while providing a summary of our master technology architecture areas. The IT department consists and described in further details four distinct divisions: IT Administration, IT Program Management Office (PMO), Business and Data Solutions, and Technical Operations. In addition, the MTP outlines IT's partnerships and advisory groups used to assist in the alignment between IT and the city's business departments.

The MTP provides a technology roadmap for each city department for the next 5 years with an annual evaluation, during which an additional year will be added to maintain the 5-year plan into the future. The plan also provides a list of emerging technologies that each department is monitoring or investigating to enhance the delivery of their services and business goals.

Master Technology Plan is made up of the following key elements:

- 1 — IT Values, Mission, and Culture
- 2 — IT Department Divisions
- 3 — Technology Strategic Focus
- 4 — IT Advisory Teams
- 5 — Master Technology Architecture
- 6 — City of Olathe Departments
- 7 — Emerging Technologies

MTP PLAN SCOPE

The City of Olathe Master Technology Plan is the result of collaboration with the Executive Leadership, Senior Management Team, IT leadership, and key staff members in planning and documenting their current and future technology needs. The plan is not intended to cover all technologies and solutions but instead is focused on the critical systems that provide city services. In addition, the MTP does not represent the business plans for each department but instead focuses on the technology required to operate city services for those departments.

The plan does cover emerging technologies in the industry that will provide ongoing support to the city's employees and departments. The information gathered during this process was affirmed by department heads through a series of in-person meetings with department heads and staff.

The city's Chief Information Officer is responsible for annually updating and collaborating with all the city departments in the review process. The plan will be made available to all department staff and to the public.

Table of Contents Link

DEVELOPMENT OF THE MASTER TECHNOLOGY PLAN

The Master Technology Plan was developed through a series of meetings with all departments, including both key staff and executives. The design and development of the MTP was completed in multiple phases:

- Phase 1: SCOPE** - The first phase included deciding what items to include, creating an outline, and obtaining Executive approval.
- Phase 2: IDENTIFICATION** - In the second phase, department heads and key staff worked with IT to identify all the critical systems and system owners that were key to the planning phase of the design.
- Phase 3: KEY SYSTEM ROADMAP** - The third phase included multiple meetings with key staff and department heads to determine the major initiatives related to each critical system for the department.
- Phase 4: TECHNOLOGY ROADMAP** - In the fourth phase, key technology management and staff helped to determine the technology roadmap.
- Phase 5: FORMALIZE THE PLAN** - Finally, in the last phase, a formalized plan was developed that aligns with the approved scope and content gathered with the departments' input.

MTP METRICS AND MEASUREMENTS

The MTP will be closely monitored and tracked utilizing the city's IT Project Management Office through the creation and updating of a SharePoint dashboard. This MTP dashboard will represent all the critical system projects as outlined in the 5-year technology roadmap. In addition, the following key performance indicators will be monitored:

- SLA** - Service Level Agreements: Measuring that our customer services are meeting expectations
- HISR** - Helpdesk Internal Survey Results: Measuring our customer's experience in working with IT Support
- MTPDR** - MTP Portfolio Delivery Results: Meeting our targeted plan objectives utilizing the MTP
- SAR** - Security Awareness Results: Measuring our internal staff's overall security awareness utilizing phishing exercises
- CIU** - Critical Infrastructure Uptime: Measuring the uptime of our critical servers minus any planned maintenance items

Additional measurements will be added as needed to ensure that our customers' experience and expectations are meeting our Master Technology Plan objectives.

Table of Contents Link

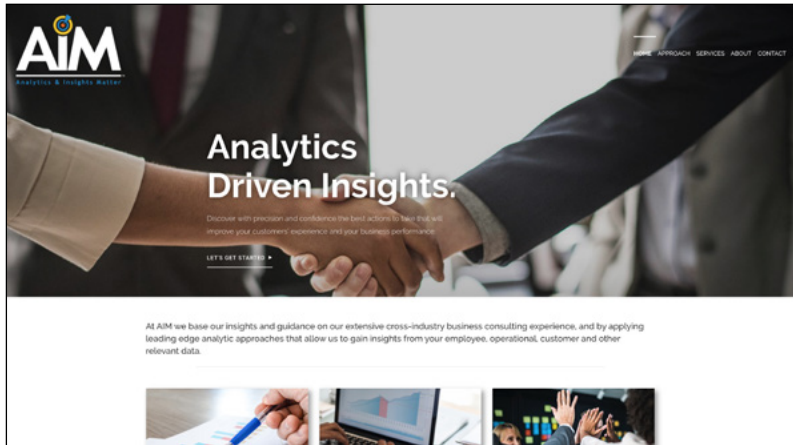
These are three pages taken from a 75 page document. Layout produced in Adobe In-Design, Illustrations produced in Adobe Illustrator

Photoshop Compositing



Website UX/UI Development (Hand Coded & CMS)

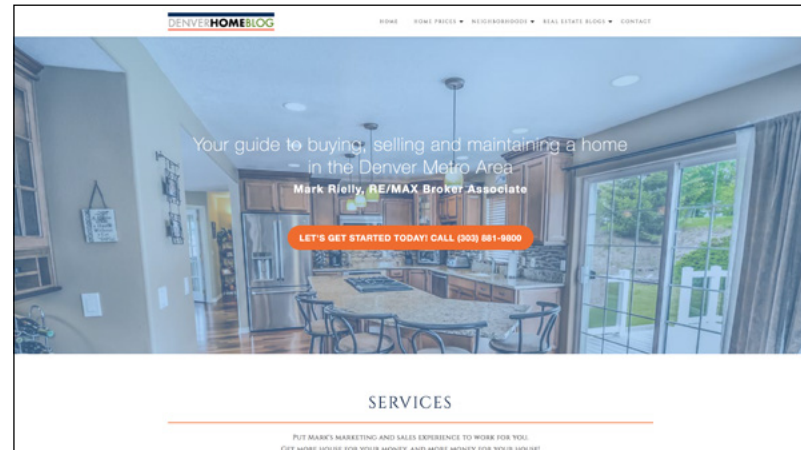
<https://analyticsandinsightsmatter.com>



WordPress

Logo: Adobe Illustrator | Photos: Adobe Photoshop | SEO: Yoast

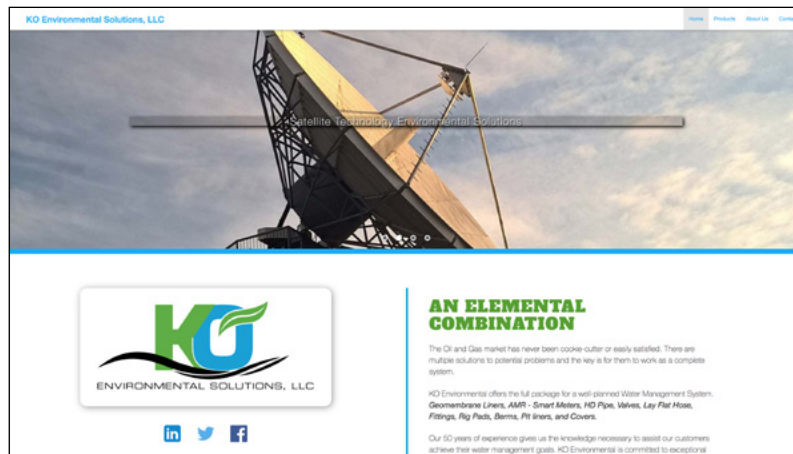
<https://denverhomeblog.com>



WordPress

Logo: Adobe Illustrator | Photos: Adobe Photoshop | SEO: Yoast

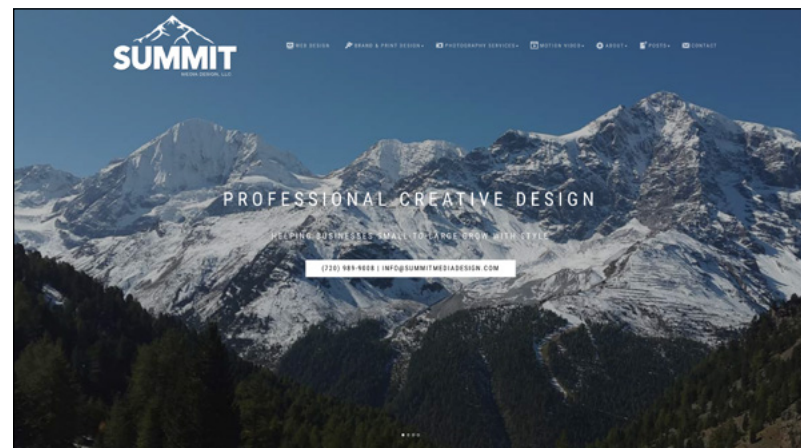
<https://KOenviro.com>



Handcoded HTML5, CSS3, Javascript

Logo: Adobe Illustrator | Photos: Adobe Photoshop | Video: Adobe Premiere | Motion Graphics: Adobe After Effects

<https://SummitMediaDesign.com>

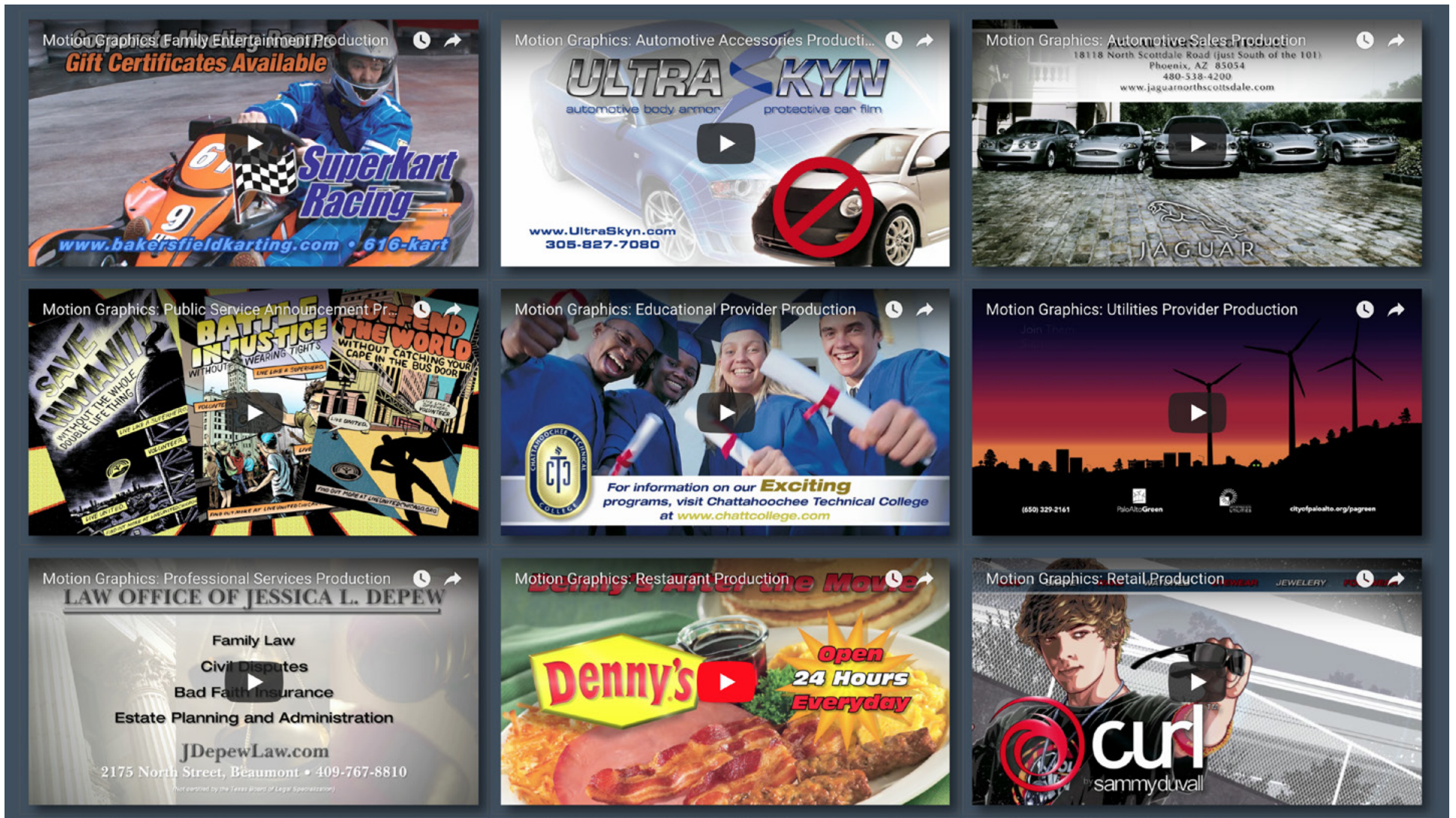


WordPress

Logo: Adobe Illustrator | Photos: Adobe Photoshop | Video: Adobe Premiere | Motion Graphics: Adobe After Effects

Motion Graphics - Creative Direction & Animation

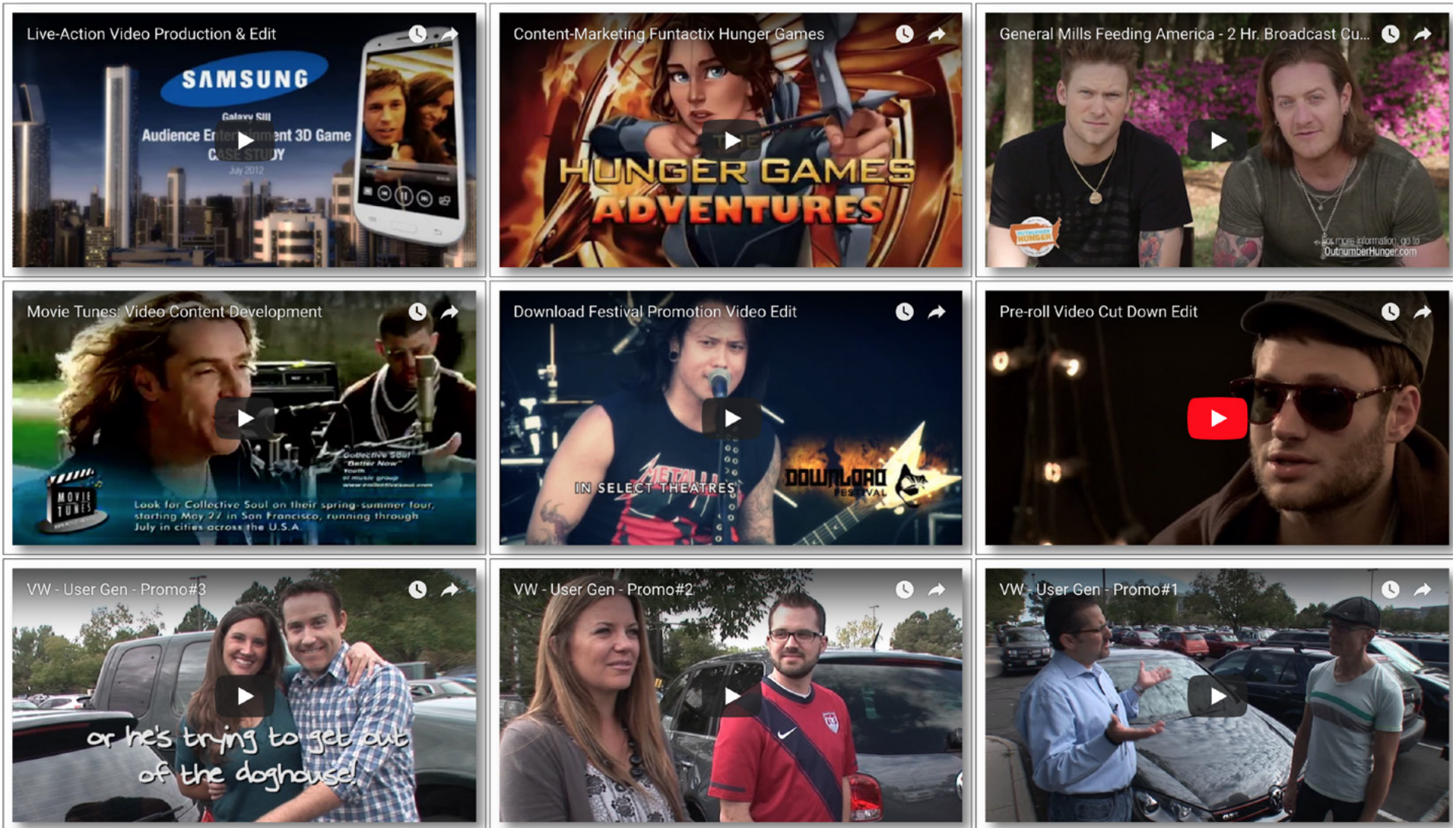
Go to <https://summitmediadesign.com/motion-graphics-advertising-2> to view full-motion ads



All advertising layouts, motion scripts, animation, compositing, rendering, encoding produced by Mike Fuchsman

Video Scripting, Creative Direction, Editing, Audio

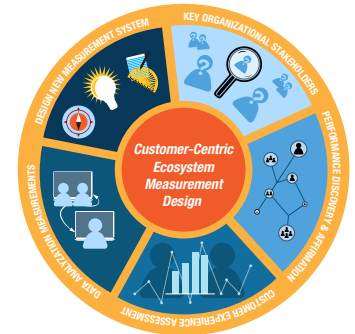
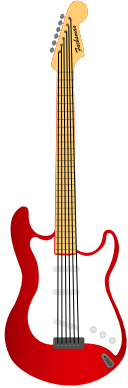
Go to <https://summitmediadesign.com/motion-graphics-advertising-2/video-broadcast-commercial-editing> to view full-motion ads



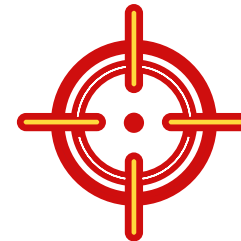
All scripts, video and audio editing, motion graphics produced by Mike Fuchsman

Digital Illustration

MISC. PROJECT ART



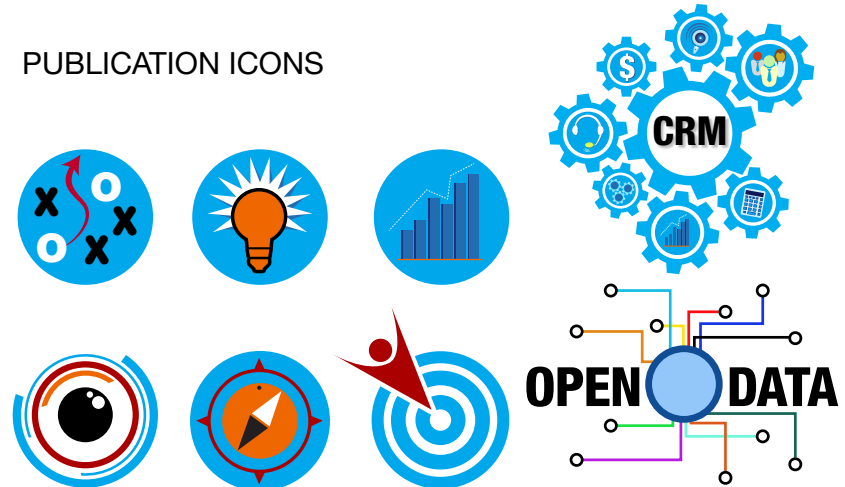
WEB APP ICONS



SOCIAL MEDIA ICONS




PUBLICATION ICONS



App Coding & Development

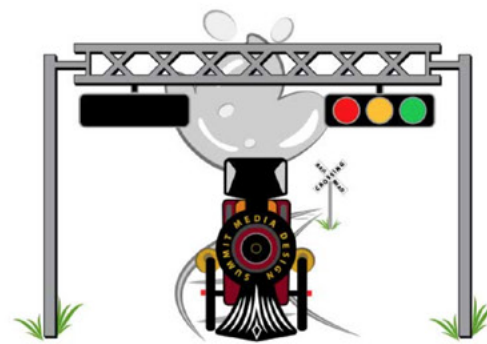
Go to <https://summitmedia1.github.io/mfuchsman-portfolio/> to access App Portfolio



A stylized illustration of a Denver light-rail train with the number '1' on its side. Below the train are two red location pins on a map, with the text 'rail system station guide' in a bold, sans-serif font.

A helpful tool providing quick, accurate and easy to understand light-rail train schedules and station location info in Denver, CO.

DENVER RAIL STATION GUIDE



An illustration of a train engine with 'SUMMIT MEDIA GROUP' written on its side, positioned under a railway crossing with a signal light showing red, yellow, and green lights.

A train/time scheduler app that incorporates a Firebase database and MomentJS to provide up-to-the-minute train arrival and departure details.

TRAIN SCHEDULE CREATOR



A collage of various brand logos including YouTube, Coca-Cola, P&G, FedEx, NBC, McDonald's, Nike, Mercedes-Benz, Walmart, Heineken, digital cinema media, and Dunkin' Donuts. In the center is a large, colorful 'TRIVIA' logo with a question mark.

An advertising trivia game using JavaScript and JQuery to manipulate HTML. Game incorporates time limits and multiple choice responses.

TRIVIA GAME



The text 'CRYSTALS GONE WILD!' in a bubbly, colorful font with a rainbow gradient, set against a background of colorful, glowing crystals.

A fun game that dynamically updates HTML with a JQuery library. To win, a player must match a numeric score by clicking on crystals with unique values.

CRYSTALS COLLECTOR GAME



The word 'Giphy' in a bold, white, sans-serif font, with the letters 'G', 'i', and 'p' on a red background, 'h' on a blue background, and 'y' on a green background.

A dynamic web page that populates with gifs developed using an API, JavaScript, JQuery, HTML and String Arrays of the developers liking.

*GIF TASTIC FUN



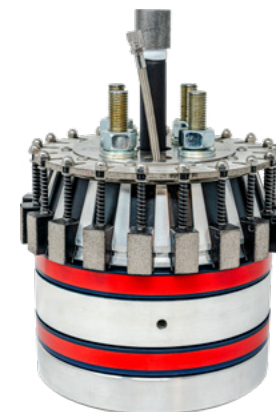
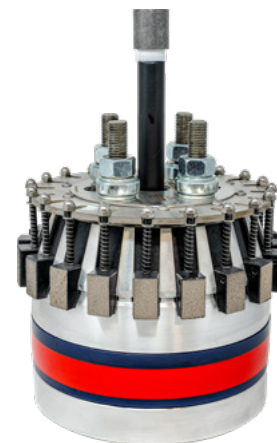
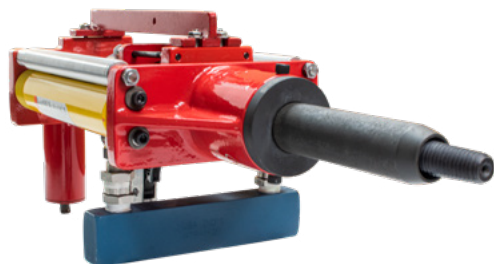
The word 'HANGMAN' in a large, green, blocky font, overlaid on a close-up image of a person's face with a surprised expression.

Hangman is a one player words guessing game. The computer guesses a word and the user picks letters one by one until the word is revealed or guesses run out.

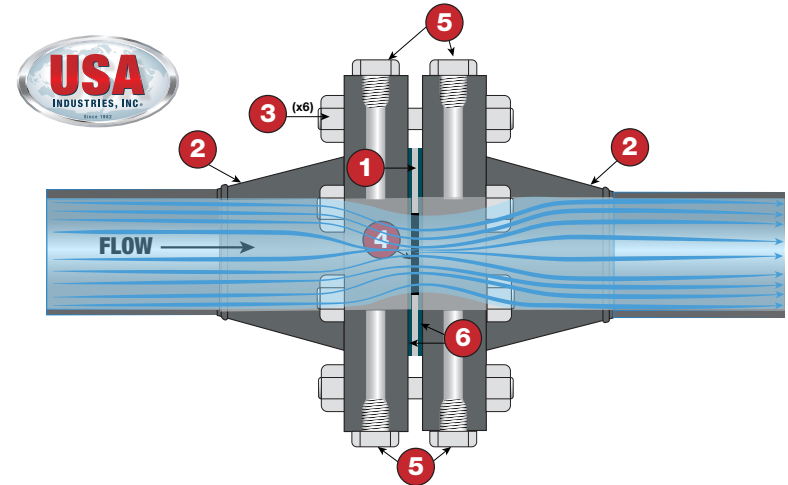
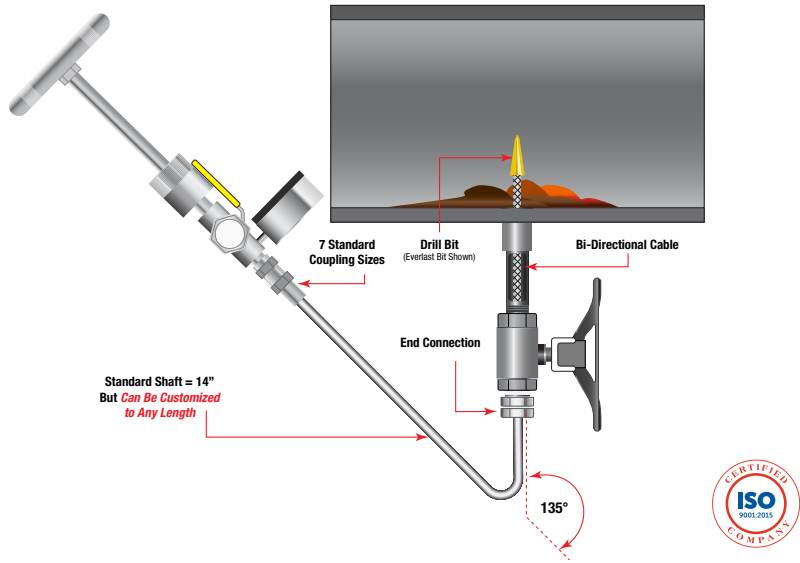
HANGMAN: A JAVASCRIPT APP

All illustrations, application code, user-interface, user-experience produced by Mike Fuchsman

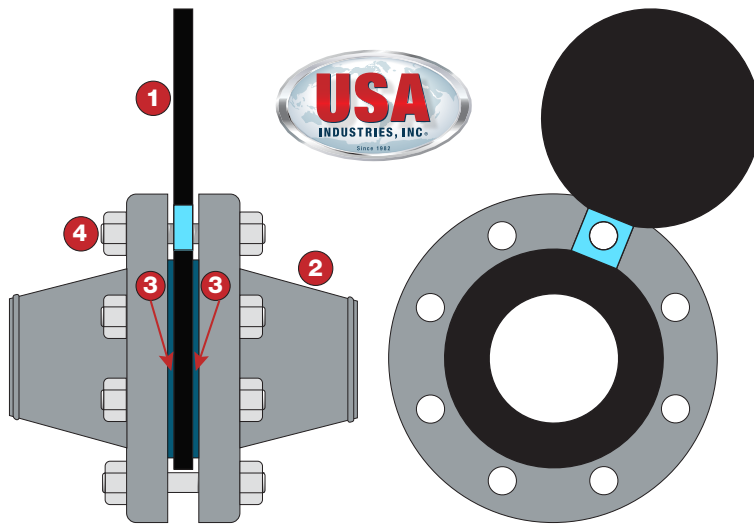
Product Photography - All images ©USA Industries. All rights reserved.



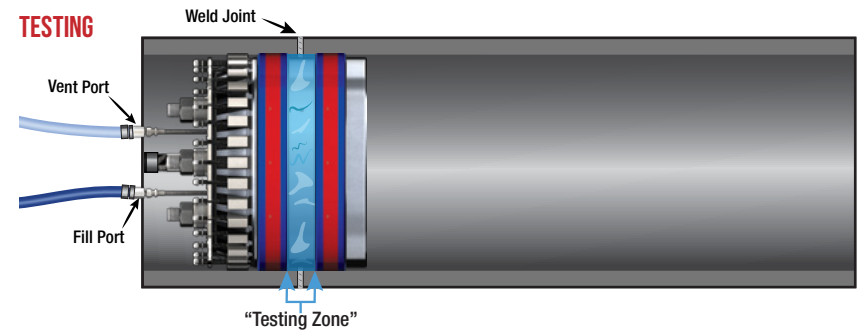
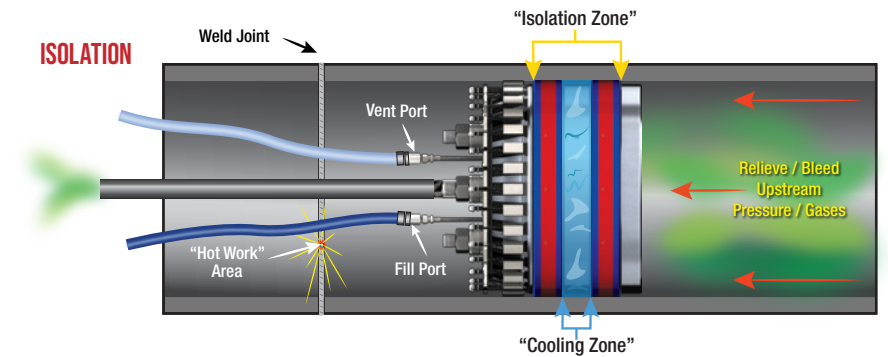
Technical Illustration - All images ©USA Industries. All rights reserved.



1. Orifice Plate 2. Flange 3. Stud Bolts 4. Flow Through Hole 5. Pressure Tappings 6. Seal Rings



1. Spectacle Blind 2. Flange 3. Gaskets 4. Stud Bolts



Marketing Collateral - Creative Direction & Design

GRIPSAFEST

OUTBOARD RETRACTION BLOCKING (ORB) ISOLATION & TEST PLUG

4" TO 24"

SUPERIOR TECHNOLOGY

- Independently Actuating Wedge System
- Gripping Wedges with Crittack™ Wedge Surface Coating
- Tri-Ply™ Seals
- Aviation Grade Aluminum Alloy Body Construction

3/4" TO 3-1/2"

USA INDUSTRIES, INC.

LOCAL (713) 941-3797 TOLL-FREE (800) 456-8721
www.USAIndustries.com/GripSafe

For GripSafe patent and trademark information, go to: <http://www.usaindustries.com/gripsafe-patents-trademarks/>

"Best-In-Class" Blind Solutions

from the National Manufacturing Leader of Piping Isolation & Testing Products

BLINDS:

- Isolation & Hydrant Thicknesses
- Standard
- Spacer
- Van (EZ Vent)
- Flange (EZ Flange)
- Work & Plug Coales (EZ Work-Plug)
- PSV Plug (EZ Calibration)
- Blind Flanges

STOCKED:

- 516 - 5478 & A106 Carbon Steels
- 304 & 316 Stainless Steels
- Series "A" & Series "B"
- 1/2" to 36" Line Sizes

RATINGS:

- 150#, 300#, 600#, 900#, 1500#, 2500#

CUSTOM:

- Any Thickness, Rating & Alloy Exactly to Your Specs

RACKS:

- EZ Lock™ with Patented Key Indexing Technology
- 120 Point # 9/16x3.00
- Acme-Thread
- 12,000 lbs.
- Up to 168 Blinds (Line Size 1 Thickness Dependent)
- Blinds up to 24-1/4" OD
- 1" and 1/2" Handle Blinds
- Showering Safety Locking Mechanism
- Heavy Duty Lifting Legs & Forklift Seats
- Easy Access to Both Sides of Unit
- Lockable
- Pressure Safety Valve (PSV - Large & Small Models)

OFFERINGS:

- Largest Stocked Inventory
- MTC's
- Double Pick-up or Delivery
- Rent or Purchase Directly from OEM
- Manufactured in the U.S.A.
- 24/7, 365 Days A Year Availability

USA INDUSTRIES, INC.

www.USAIndustries.com • info@USAIndustries.com • (866) 254-1902

"Best-In-Class" Pipe Plugs

from the National Manufacturing Leader of Piping Isolation & Testing Products

GRIPSAFE MODELS:

- Double Block & Bleed (DB-DB)
- Outboard Retraction Blocking (OR-OR)
- Inboard Retraction Blocking (IB-IB)

BENEFITS:

- Instantly Secure
- Superior Self Stripping to Competitive Products
- To Fly™ Seals
- Griplock™ Wedges
- Low Weight
- Does Not Scar Pipe Wall
- Non-Contaminating

STOCKED SIZES:

- 3/4" to 31" Line Sizes

INDUSTRY COMPLIANCE:

- ASME B31.5, ASME B31.1, ASME B31.3
- Meets ASME PCC-3-2016 Standards

PATENTS & TRADEMARKS:

- For up-to-date information go to: <http://www.usaindustries.com/blind-isolation-testing-products/gripsafe-patents-trademarks/>

PLUG MODELS:

- Flange Weld Test (F7)
- Double Block & Bleed (DB)
- Heavy Duty Sealable

AVAILABLE PLUG MODELS NOT SHOWN:

- Weldable Sealable
- Flareless Single Bolt
- Wing Nut
- Grip-Type

OFFERINGS:

- Largest Stocked Inventory
- Double Pick-up or Delivery
- Rent or Purchase Directly from OEM
- Manufactured in the U.S.A.
- 24/7, 365 Days A Year Availability

www.USAIndustries.com
info@USAIndustries.com

EZ TORQUE® SURE SEAL GASKETS

For Air-Cooled Heat Exchanger Assemblies

ENVIRONMENTALLY SUPERIOR - NO LEAKS | POSITIVE SEALING®

USA Industries' EZ Torque Sure Seal Gaskets are designed to provide a positive seal and require less than half the installation torque required for typical soft iron gaskets. Lower torque means no more stripping of threads which prevents the gasket from seating.

Our innovative design incorporates a graphite outer shell over a special machined metal inner core. The layered design allows the graphite to be compressed and held in place, sealing against imperfections on the surface area. Due to the compressive load stored in the gasket's design, leaks due to typical thermal cycling are eliminated.

The graphite outer shell virtually eliminates the need to re-machine the gasket surface area due to roughness, scale or corrosion typically found in the field.

USA INDUSTRIES, INC. EZ TORQUE® CHART

Nominal Size	EZ Torque (ft-lb)	Standard (ft-lb)	Recommended Torque Ranges					
			150#	300#	600#	900#	1500#	2500#
1/2"	1.500	2.500	100	150	200	250	300	350
3/4"	2.000	3.500	150	200	250	300	350	400
1"	2.500	4.500	200	250	300	350	400	450
1 1/2"	3.500	6.500	250	300	350	400	450	500
2"	4.500	8.500	300	350	400	450	500	550
2 1/2"	5.500	10.500	350	400	450	500	550	600
3"	6.500	12.500	400	450	500	550	600	650
3 1/2"	7.500	14.500	450	500	550	600	650	700
4"	8.500	16.500	500	550	600	650	700	750
4 1/2"	9.500	18.500	550	600	650	700	750	800
5"	10.500	20.500	600	650	700	750	800	850
5 1/2"	11.500	22.500	650	700	750	800	850	900
6"	12.500	24.500	700	750	800	850	900	950
6 1/2"	13.500	26.500	750	800	850	900	950	1000
7"	14.500	28.500	800	850	900	950	1000	1050
7 1/2"	15.500	30.500	850	900	950	1000	1050	1100
8"	16.500	32.500	900	950	1000	1050	1100	1150
8 1/2"	17.500	34.500	950	1000	1050	1100	1150	1200
9"	18.500	36.500	1000	1050	1100	1150	1200	1250
9 1/2"	19.500	38.500	1050	1100	1150	1200	1250	1300
10"	20.500	40.500	1100	1150	1200	1250	1300	1350
10 1/2"	21.500	42.500	1150	1200	1250	1300	1350	1400
11"	22.500	44.500	1200	1250	1300	1350	1400	1450
11 1/2"	23.500	46.500	1250	1300	1350	1400	1450	1500
12"	24.500	48.500	1300	1350	1400	1450	1500	1550
12 1/2"	25.500	50.500	1350	1400	1450	1500	1550	1600
13"	26.500	52.500	1400	1450	1500	1550	1600	1650
13 1/2"	27.500	54.500	1450	1500	1550	1600	1650	1700
14"	28.500	56.500	1500	1550	1600	1650	1700	1750
14 1/2"	29.500	58.500	1550	1600	1650	1700	1750	1800
15"	30.500	60.500	1600	1650	1700	1750	1800	1850
15 1/2"	31.500	62.500	1650	1700	1750	1800	1850	1900
16"	32.500	64.500	1700	1750	1800	1850	1900	1950
16 1/2"	33.500	66.500	1750	1800	1850	1900	1950	2000
17"	34.500	68.500	1800	1850	1900	1950	2000	2050
17 1/2"	35.500	70.500	1850	1900	1950	2000	2050	2100
18"	36.500	72.500	1900	1950	2000	2050	2100	2150
18 1/2"	37.500	74.500	1950	2000	2050	2100	2150	2200
19"	38.500	76.500	2000	2050	2100	2150	2200	2250
19 1/2"	39.500	78.500	2050	2100	2150	2200	2250	2300
20"	40.500	80.500	2100	2150	2200	2250	2300	2350
20 1/2"	41.500	82.500	2150	2200	2250	2300	2350	2400
21"	42.500	84.500	2200	2250	2300	2350	2400	2450
21 1/2"	43.500	86.500	2250	2300	2350	2400	2450	2500
22"	44.500	88.500	2300	2350	2400	2450	2500	2550
22 1/2"	45.500	90.500	2350	2400	2450	2500	2550	2600
23"	46.500	92.500	2400	2450	2500	2550	2600	2650
23 1/2"	47.500	94.500	2450	2500	2550	2600	2650	2700
24"	48.500	96.500	2500	2550	2600	2650	2700	2750

NOTES: The recommended torque range shown above for EZ Torque Gaskets will help the manufacturer obtain the correct thread strength.

BENEFITS:

- Low torque design
- Eliminates stripping the threads by over-torquing to seal
- No environmental leaks
- Virtually eliminates field reworking
- Cost effective, low cost of ownership
- Saves time. During removal, graphite prevents gasket from seating to flange or plug
- Creates an airtight atmosphere containment
- Metals used in any material type - 304SS, Inconel, Hastelloy, Nickel, etc.
- Can be used with existing plugs in the field
- Self-aligning when used with USA Industries, Inc.'s manufactured plugs
- Quick delivery - Available 24/7/365

When Ordering Gaskets Specify:

Plug Threaded Hole Size • Material of Construction • Quantity • Delivery Cycle

Material codes:

- C - Carbon
- B - Brass
- I - Inconel
- Z - 304 Carbon
- R - 304SS
- H - Hastelloy
- N - Nickel
- T - Titanium
- M - Monel
- Z - 2025 Aluminum

Contact USA INDUSTRIES, INC.
Locally (713) 941-3797 Toll-Free (800) 456-8721
or go to www.USAIndustries.com

USA Industries, Inc. • 835 State Street, South Houston, TX 77067 • 60705 USA Industries, Inc. • © 2019 USA Industries

USA INDUSTRIES, INC.

(713) 941-3797
(800) 456-8721
www.USAIndustries.com

INDUSTRY LEADING PRODUCT QUALITY & TURNAROUND TIMES

PIPE PLUGS, SPACER PLUGS, HEAVY DUTY GASKETS

PIPE PLUGS, SPACER PLUGS, HEAVY DUTY GASKETS

TOOL & TOOLING TO BUILD, REPAIR & COME HEAT EXCHANGERS, BOILERS & CONDENSERS

CUSTOM MACHINING & ENGINEERING SERVICES

BUY DIRECT FROM THE MANUFACTURER AND SUPPLIER!

24/7

ISO 9001

USA INDUSTRIES, INC.

PRODUCT CATALOG

Piping Isolation & Testing • Tube Plugs • Orifice Plates • Heat Exchanger Tools • Custom Machining

INTRODUCING USA INDUSTRIES' NEW BEST-IN-CLASS ENVIRONMENTALLY SUPERIOR - NO LEAKS | POSITIVE SEALING® GRIPSAFEST ORB

ISO 9001

LINE SIZES • SPACERS, BLIND FLANGES, STORAGE • AIR JETTING & TESTING PIPE PLUGS • BURNED CLOSURE, BLEED PLUGS • POWERED, METAL TAPPED & BURN WITH TYPIC TUBE PLUG HEADS • SAFETY • MATERIALS, PIPING & 316 TYPIC SERVICE PLATES, RESTRICTION DEVICE HEADS • HEAT EXCHANGER TOOLS & TOOLING • 1500 PSI • 1500 PSI • 1500 PSI

www.USAIndustries.com | info@USAIndustries.com | (713) 941-3797 | (800) 456-8721

USA INDUSTRIES, INC.

EZ-LOCK® BLIND STORAGE RACK OPERATING MANUAL

U.S. Patent 9,546,989 - January 17, 2017

www.USAIndustries.com (713) 941-3797 • (800) 456-8721
315 State Street • S. Houston, TX 77067

USA INDUSTRIES, INC.

Manufacture and Supplier of High Quality Line Blinds & Spacers, Pressure Testing & Isolation Pipe Plugs, Orifice Plates, Tube Plugs, Heat Exchanger Tools & Tooling and more!

ISO 9001

Advertising - Creative Direction & Design

INSTANT SAFETY

GRIPSAFE^{SR}

DOUBLE BLOCK & BLEED (DBB)
INBOARD INSERTION BLOCKING (IBB)
OUTBOARD RETRACTION BLOCKING (ORB)

SUPERIOR TECHNOLOGY

The ALL NEW GripSafe^{SR} line of isolation and testing plugs deliver the **safest and most secure gripping technology** with a patented **Independently Actuating Wedge System**

www.USAIndustries.com/GripSafe-BIC
(713) 322-7588 • (866) 254-1902 • info-BIC@USAIndustries.com

USA INDUSTRIES, INC.

Auto locking functionality available on DBB and ORB models.

For the latest GripSafe patent and trademark information, go to: <https://www.usaindustries.com/gripsafe-patents-trademarks/>

Shoulder Plugs & EZ Torque[®] Gaskets
Stocked & Ready to Ship

Call (281) 746-6569 or email info@USAindustries.com

USA INDUSTRIES, INC.

BLIND FLANGE

BASED ON THE TRUE STORY OF PIPE IMPRISONMENT

MANUFACTURED BY **USA INDUSTRIES, INC.** AVAILABLE **ALWAYS**

FIND US www.USAIndustries.com CALL 713.941.3797 • 800.456-8721

STARRING SNAP IT[®] JR. PLUGS • SNAP IT SR. PLUGS • SNAP IT INSTALLATION & REMOVAL TOOLS KIT

USA INDUSTRIES, INC.

What do these faces have in common?

Absolutely Nothing. One is a Boxer puppy's face, and the others are Industrial Blinds.
Contact USA Industries, Inc. when you need to purchase or rent the blinds.*

*Puppy not included. Support your local ASPCA.

USA INDUSTRIES, INC.

(281) 746-6569 • (800) 456-8721
info@USAIndustries.com • www.USAIndustries.com

"SIMPLY THE BEST"

Custom 2" Piping Isolation & Testing Plug Manufactured & Delivered To Customer 10/12/2021

We believe beauty and utility can co-exist.

USA INDUSTRIES, INC.

(281) 746-6569 • (866) 551-8771 • info@usaindustries.com • www.USAIndustries.com

GripSafe[®] pipe plugs are patented and exclusively manufactured by USA Industries, Inc.

Why yes. Yes it is kind of shaped like the Eiffel Tower.

Snap[®] tube plugs require no welding, are a permanent plugging solution, and cause no damage to tube sheets, tubes, ligaments or joints.

"Oui Oui"

Call to purchase yours - (281) 746-6569
info@usaindustries.com | www.USAIndustries.com

Snap It Jr.'s are rated up to 1,000 psi
Snap It Sr.'s are rated up to 2,000 psi

USA INDUSTRIES, INC.